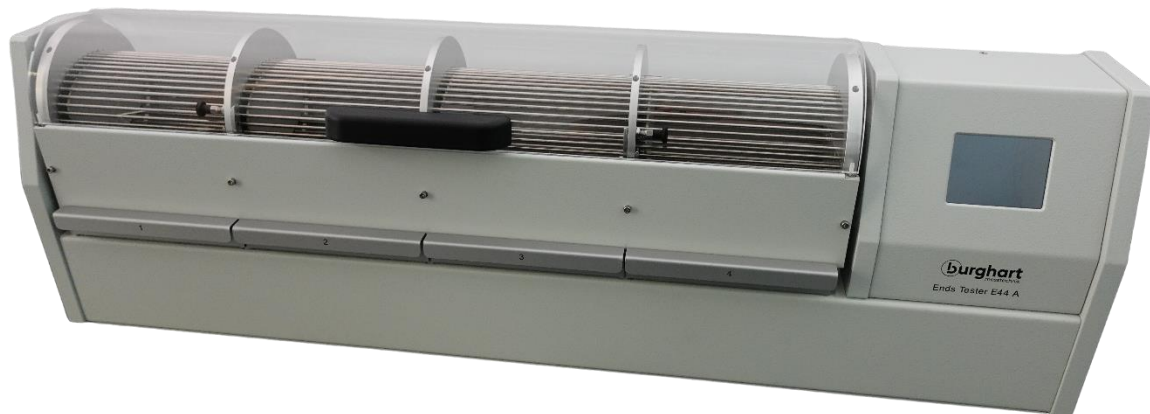


FACT SHEET

● Ends Tester E44 A



The Ends Tester E44 A is used to determine the loss of tobacco from the cigarette ends with or without filter. For this purpose, the E44 simulates the rolling and rubbing movements of the cigarettes during production process. The E44 A works in accordance with ISO 3550-1.

A defined number of cigarettes is placed in the chambers and usually subjected to 270 revolutions in 3 minutes. The E44 A stops automatically after reaching the pre-set number of revolutions. The tobacco falling from the cigarette ends is collected in the drawers. The weight of collected tobacco is an indicator for the end stability.

Number of chambers:	4
Cigarette length:	max. 120 mm
Cigarette diameter:	min. 4,5 mm
Distance between metal rods:	3,5 mm
Capacity Cigarette chamber:	approx. 50 pieces by a cigarette diameter of 7.9mm

Technical data

Operating voltage:	110 - 240 V, 50 - 60 Hz
Power consumption:	50 VA
Dimensions:	approx. 190 x 900 x 280 mm (D x W x H)
Weight:	approx. 15,8 kg

Subject to alterations.